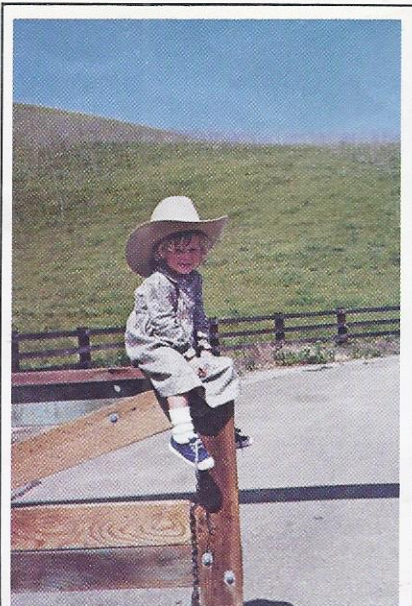
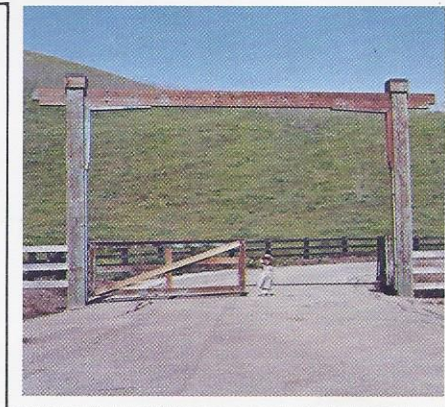
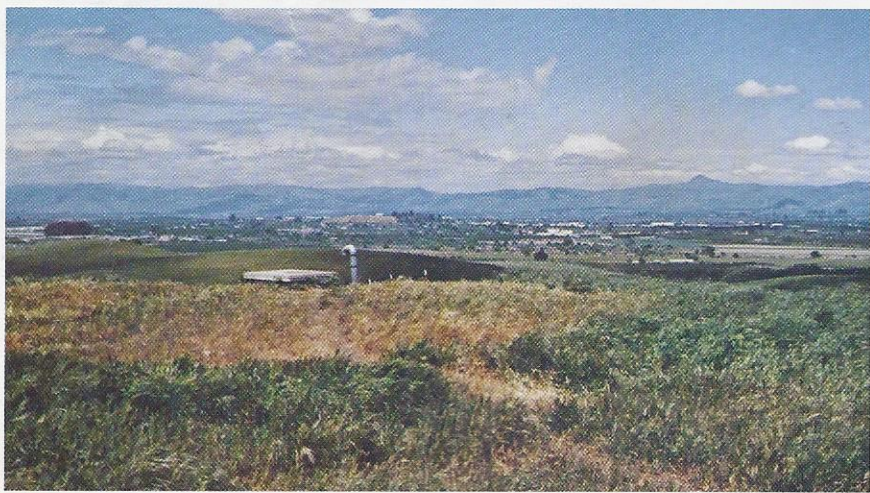


**HIDDEN VALLEY**



# HIDDEN VALLEY



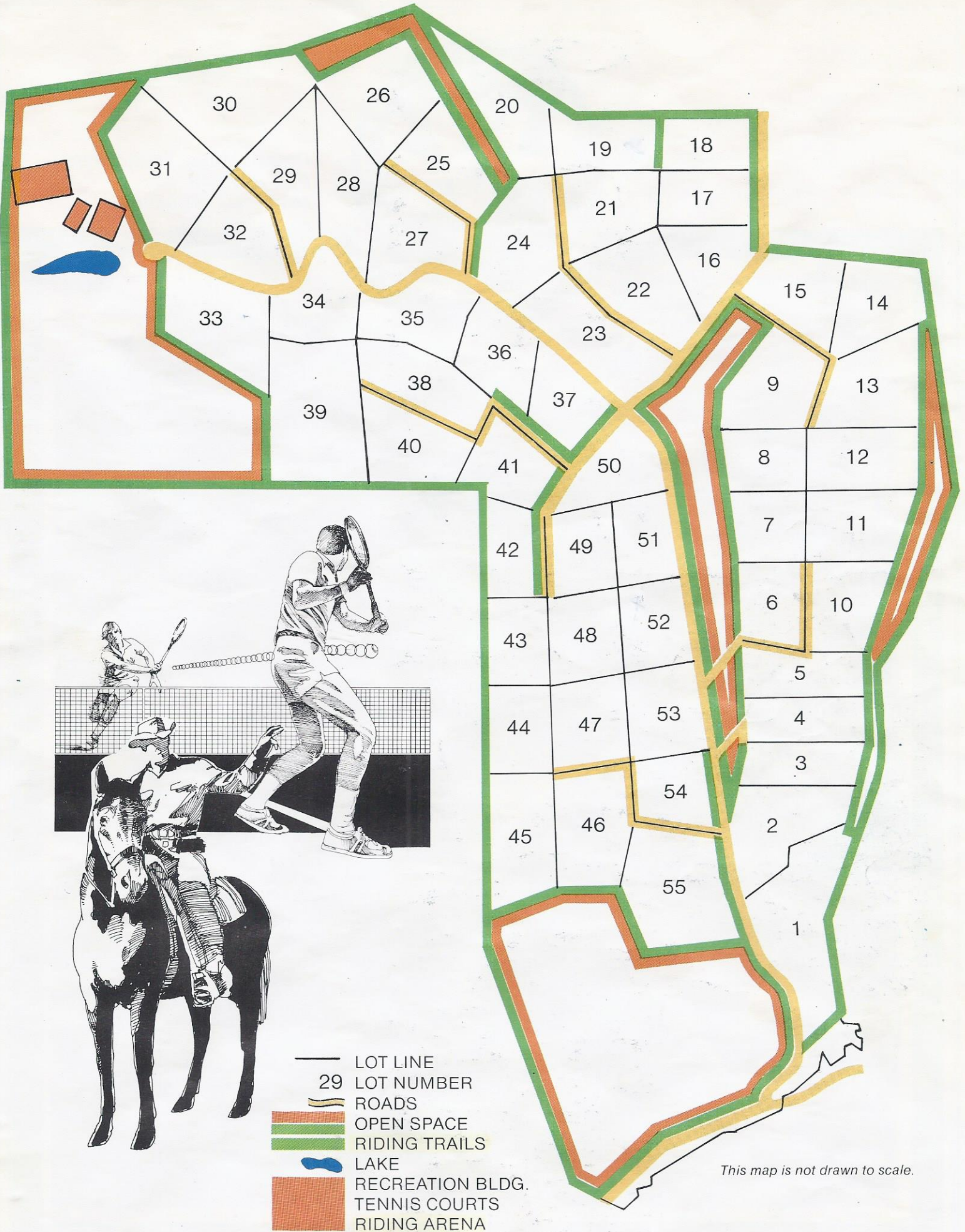
Exclusive rural equestrian — tennis Planned Unit Development. 3 miles Southwest of Hollister, California. 6 miles of riding trails adjoins each lot. Riding arena — Professional sand — sawdust all year surface. 2 tennis courts with recreation building and small lake. 55 View Lots, 5 to 15 acres each. Overlooks Hollister and Santa Clara Valley.

- Mild Climate — Cool Breezes.
- Superior Domestic Water System —
- Future Water for Irrigation
- From San Felipe Project.
- Covenants and Restrictions provide future security and continued appreciation.
- Private roads built to County specifications.
- 200 Acres Open Space
- \$65,000 to \$85,000, Terms

## EXCLUSIVE SALES AGENTS:

**Sabbatini Real Estate**  
853 San Benito  
Hollister, Calif. 95023  
408-637-5531

**Van Vleck Realty**  
200 Tres Pinos Rd., P.O. Box 1034  
Hollister, Calif. 95023  
408-637-6334





Hidden Valley Partnership  
 P.O. Box 648  
 Monterey, CA 93940

